

2012-2013 Report Card for
Bobby F. Grigsby Intermediate School

SCHOOL GRADE

Coming in
2015



Achievement

This grade combines two results for students who took the state tests. The first result answers the question – How many students passed the state test? The second result answers the question – How well did students do on the state test?

Performance Index
 84.4% **B**
Indicators Met
 100.0% **A**

COMPONENT GRADE

Coming in
2015



Progress

This is your district's average progress for its students in math and reading, grades 4-8. It looks at how much each student learns in a year. Did the students get a year's worth of growth? Did they get more? Did they get less?

Value Added
 Overall..... **A**
 Gifted..... **C**
 Students with Disabilities..... **C**
 Lowest 20% in Achievement..... **D**

COMPONENT GRADE

Coming in
2015



Gap Closing

This grade shows how well all students are doing in your district in reading, math, and graduation. It answers the question – Is every student succeeding, regardless of income, race, culture or disability?

Annual Measurable Objectives
 75.0% **C**

COMPONENT GRADE

Coming in
2015



Graduation Rate

This grade answers the question – How many ninth graders graduate in four years or five years?

Graduation Rates
This school is not evaluated for graduation rate because there are not enough students in the graduating class.

COMPONENT GRADE

Coming in
2015



K-3 Literacy

This grade answers the question – Are more students learning to read in kindergarten through third grade? The 2014 report card will report some results. The 2015 report card will display one grade for kindergarten through grade 3.

COMPONENT GRADE

Coming in
2015



Prepared for Success

This grade answers the question – Are students who graduate from our district ready for college or a career? There are six ways to show that graduates are prepared. In the 2014 school year, the report card will show results for the six areas. The 2015 report card will display one grade combining the results of all six ways of showing graduates are prepared.

COMPONENT GRADE

Coming in
2015

2012-2013 Report Card for Bobby F. Grigsby Intermediate School

Achievement



This grade combines two results for students who took the state tests. The first result answers the question – How many students passed the state test? The second result answers the question – How well did students do on the state test?

COMPONENT GRADE

Coming in
2015

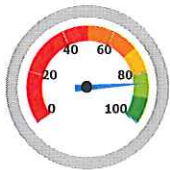
GRADE

B

Performance Index

The Performance Index measures the test results of every student, not just those who score proficient or higher. There are six levels on the index and districts receive points for every student in each of these levels. The higher the achievement level the more the points awarded in the district's index. This rewards schools and districts for improving performance.

Performance Index

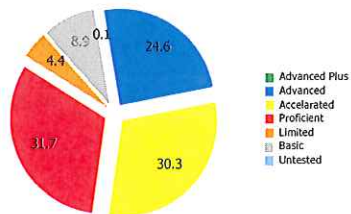


Achievement Level	Pct of Students	Points for this Level	Points Received
Advanced Plus	0.1	x 1.3	= 0.2
Advanced	24.6	x 1.2	= 29.5
Accelerated	30.3	x 1.1	= 33.3
Proficient	31.7	x 1.0	= 31.7
Basic	8.9	x 0.6	= 5.3
Limited	4.4	x 0.3	= 1.3
Untested	0.0	x 0.0	= 0.0
			101.3

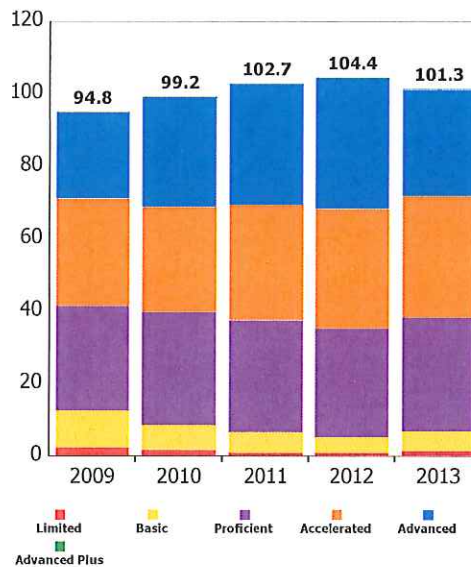
84.4%

101.3 of a possible 120.0

- A = 90.0 - 100.0%
- B = 80.0 - 89.9%
- C = 70.0 - 79.9%
- D = 50.0 - 69.9%
- F = 0.0 - 49.9%



Performance Index Trend



2012-2013 Report Card for Bobby F. Grigsby Intermediate School

GRADE

Indicators Met

A

Indicators Met measures how many students have passed the state tests at a minimum level, called proficient, or higher. Test results are reported for each student in a grade and subject. At least 75 percent of students must pass to get credit for the indicator. Starting in the 2013-14 school year, a district or school needs to have 80 percent of their students pass at a minimum level or higher in order to "meet" an indicator.

Indicators Met %

100.0%
7.0 out of 7.0

- A = 90.0 - 100.0%
- B = 80.0 - 89.9%
- C = 70.0 - 79.9%
- D = 50.0 - 69.9%
- F = 0.0 - 49.9%



Grades 3-5

3rd Grade	Mathematics	91.7%	✓
	Reading	90.0%	✓
4th Grade	Mathematics	95.0%	✓
	Reading	91.5%	✓
5th Grade	Mathematics	81.0%	✓
	Reading	81.0%	✓
	Science	77.8%	✓

Grades 6-8

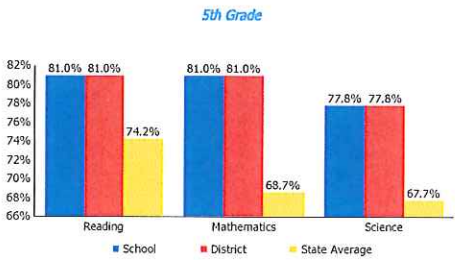
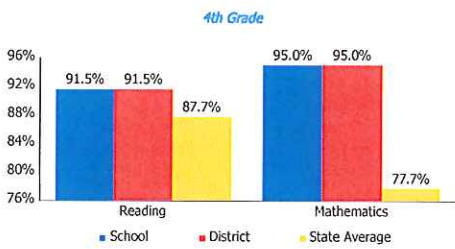
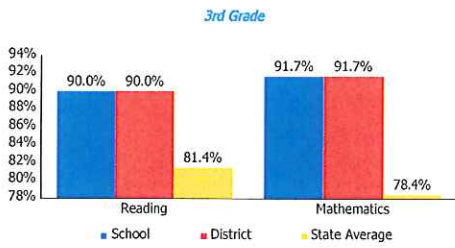
This school does not have enough test results in 6th, 7th, or 8th grade to display this table.

Ohio Graduation Test

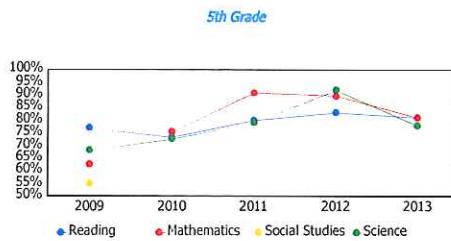
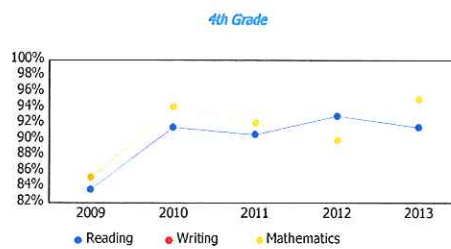
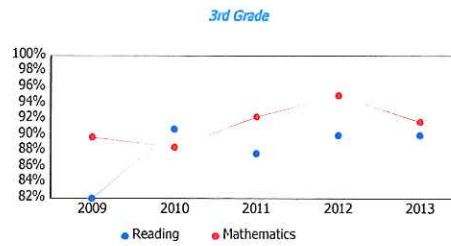
This school does not have enough Ohio Graduation Test results to display this table.

2012-2013 Report Card for Bobby F. Grigsby Intermediate School

Proficiency Percent Comparison by Grade



Proficient Percent Trend by Grade



2012-2013 Report Card for Bobby F. Grigsby Intermediate School

Progress



This is your school's average progress for its students in math and reading, grades 4-8. It looks at how much each student learns in a year. It answers the question – Did the students get a year's worth of growth? Did they get more? Did they get less?

COMPONENT GRADE

Coming in 2015

GRADE	Overall This measures the progress for all students in math and reading, grades 4-8.
A	
GRADE	Gifted Students This measures the progress for students identified as gifted in reading, math, and/or superior cognitive ability.
C	
GRADE	Students in the Lowest 20% in Achievement This measures the progress for students identified as the lowest 20% statewide in reading and math achievement.
D	
GRADE	Students with Disabilities This measures the progress for students with disabilities.
C	
GRADE	High School A High School measure of progress will be implemented in the 2015-16 school year.
Coming in 2016	

Progress Details

This table shows the Progress scores by test grade and subject.

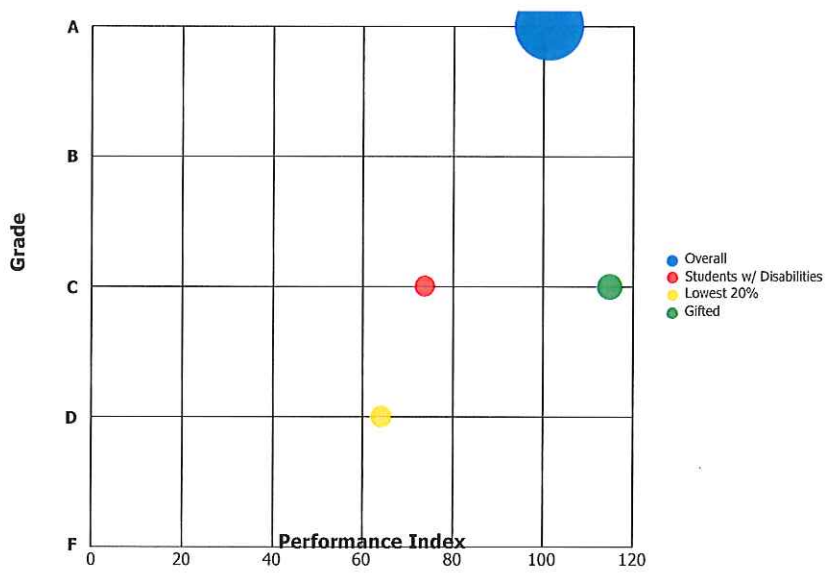
Test Grade	Progress Score		
	Reading	Mathematics	All Tests
All Grades	0.8	5.4	3.8
4th Grade	0.7	0.6	0.9
5th Grade	0.3	6.2	3.9

Although Progress scores are not assigned letter grades at this level of detail, the grading scale applied at the Overall (All Students, All Tests) level is:

A = 2.0 and up
 B = 1.0 to 1.9
 C = -1.0 to 0.9
 D = -2.0 to -1.1
 F = below -2.0

Progress vs. Performance Index

This bubble chart shows the relationship between each subgroup's performance index results (horizontal axis) to the Value-Added letter grade (vertical axis). The size of the bubble represents the size of the student subgroup.



2012-2013 Report Card for Bobby F. Grigsby Intermediate School

Gap Closing



This grade shows how well all students are doing in your district in reading, math, and graduation. It answers the question – Is every student succeeding, regardless of income, race, culture or disability?

COMPONENT GRADE

Coming in
2015

GRADE

C

Annual Measurable Objectives

Annual Measurable Objectives (AMOs) compare the performance of all students to a state goal which is displayed as the red line in the following charts. These charts show how well each group achieves that goal in reading, math and graduation – and emphasize any achievement gaps that exist between groups. The ultimate goal is for all groups to achieve at high levels.

AMO Points



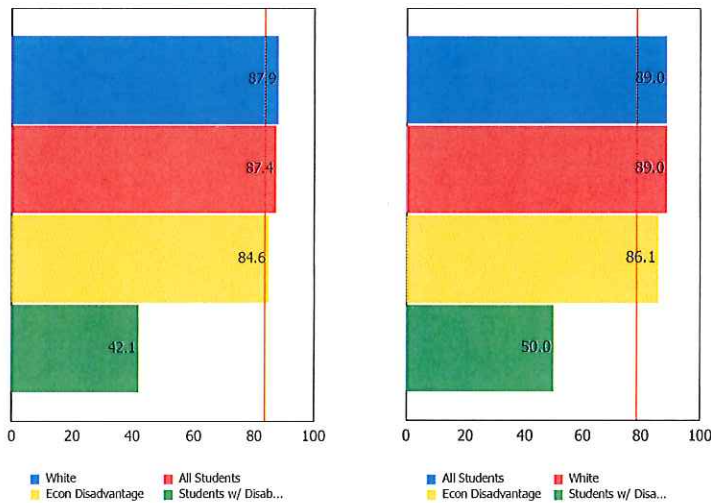
75.0%

- A = 90.0 - 100.0%
- B = 80.0 - 89.9%
- C = 70.0 - 79.9%
- D = 60.0 - 69.9%
- F = 0.0 - 59.9%

Reading

Math

Graduation Rate



This school has no Annual Measurable Objectives for Graduation Rate because there were not enough students to evaluate.

The red line on each graph identifies the Annual Measurable Objective. The 2013 AMO for Reading is 83.4%, for Math is 78.5%, and for Graduation Rate is 75.9%. Subgroups with fewer than 30 students are not rated and do not appear on the graphs.

Graduation Rate



This grade represents the percentage of students whom entered the 9th grade and graduated 4 and 5 years later.



*This school has not been assigned
a grade for Graduation Rate
because there were not enough
students to evaluate.*

The Graduation Rate graph that would appear in this space cannot be displayed because there were not enough students to evaluate.

2012-2013 Report Card for Bobby F. Grigsby Intermediate School



Principal: Shane Estep
Address: 100 Jamaica Rd
 Carlisle OH 45005-3110

Phone: (937) 746-8969

Directory information current as of the 2012-2013 Report Card publication date

Your School's Students

Average Daily Enrollment:

384

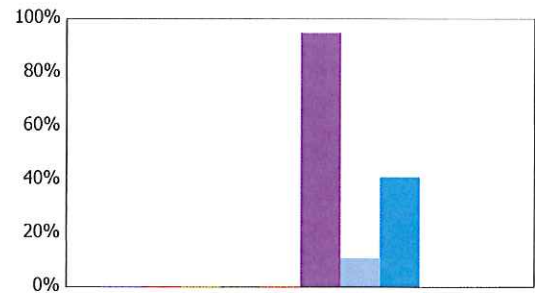
Number of Limited English Proficiency Students Excluded from Accountability Calculations:

--

Enrollment by Subgroup

	Enrollment #	Enrollment %
Am. Indian / Alaskan Native	NC	
Asian or Pacific Islander	NC	
Black, Non-Hispanic	NC	
Hispanic	NC	
Multiracial	NC	
White, Non-Hispanic	364	94.9%
Students with Disabilities	41	10.7%
Economically Disadvantaged	158	41.1%
Limited English Proficiency	NC	
Migrant	NC	

NC = Not Calculated because there are fewer than 10 in the group



- American Indian or Alaska...
- Asian or Pacific Islander
- Black, Non-Hispanic
- Hispanic
- Multiracial
- White, Non-Hispanic
- Students with Disabilities
- Economic Disadvantage
- Limited English Proficiency
- Migrant

Mobility Rates by Subgroup

	Student Mobility %
All Students	0.0%
Am. Indian / Alaskan Native	NC
Asian or Pacific Islander	NC
Black, Non-Hispanic	NC
Hispanic	0.0%
Multiracial	NC
White, Non-Hispanic	0.0%
Students with Disabilities	0.0%
Economically Disadvantaged	0.0%
Limited English Proficiency	NC
Migrant	NC

A mobility rate chart cannot be displayed for this school because either there are not enough students to evaluate in any subgroup or all calculated results are 0.0%.

NC = Not Calculated because there are fewer than 10 in the group

Your School's Teachers

Your School's Poverty Status: Medium-Low	Your School	Your District
Percentage of teachers with at least a Bachelor's Degree	100.0	99.1
Percentage of teachers with at least a Master's Degree	69.6	71.0
Percentage of core academic subject and elementary classes not taught by Highly Qualified Teachers	0	0
Percentage of core academic subject and elementary classes taught by properly certified teachers	100	99.6
Percentage of core academic subject elementary and secondary classes taught by teachers with temporary, conditional or long-term substitute certification/licensure	0	0

High-poverty schools are those ranked in the top quartile based on the percentage of economically disadvantaged students. Low-poverty schools are those ranked in the bottom quartile based on the percentage of economically disadvantaged students. A district may have buildings in both quartiles, in just one quartile or in neither quartile.

NC = Not Calculated because there are fewer than 10 in the group

Wellness and Physical Education

The extent to which students are successful in meeting the benchmarks contained in Ohio's physical education standards

Moderate Success

Financial Data

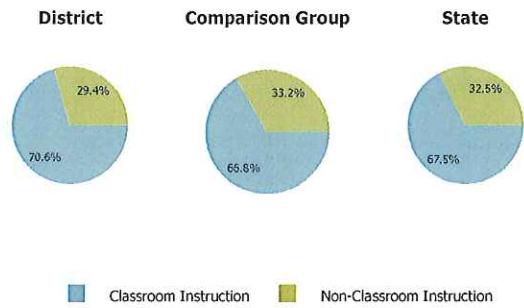
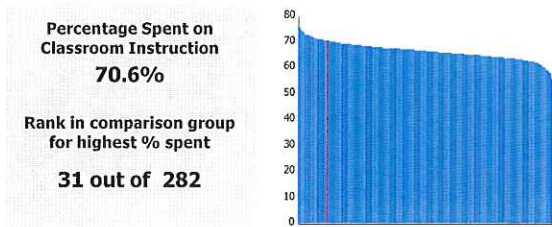


These measures answer several questions about spending and performance. How much is spent on Classroom instruction? How much, on average, is spent on each student? What is the source of the revenue? How do these measures compare to other districts and schools?

Note: Financial data is district level data. The data on this page is for Carlisle Local, not just Bobby F. Grigsby Intermediate School.

Comparison Group: Enrollment between 1000 and 2499

Classroom Spending Data



Spending per Pupil Data

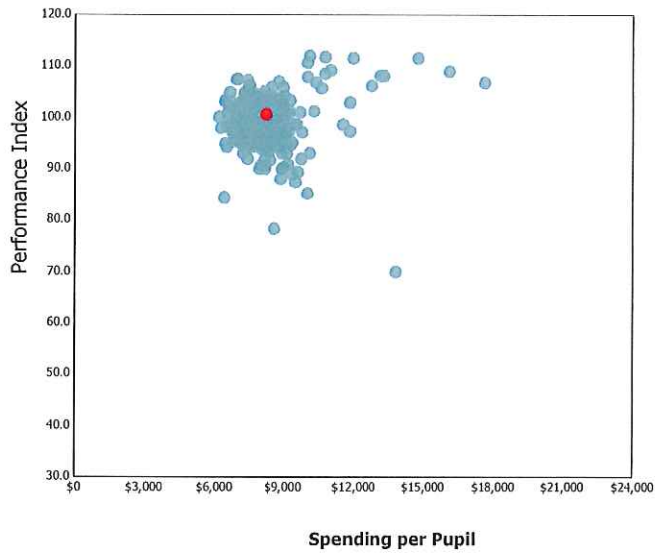
	District	State
Operating Spending per Pupil	\$8,247	\$8,814
Classroom Instruction	\$5,820	\$5,953
Non-Classroom Spending	\$2,427	\$2,861



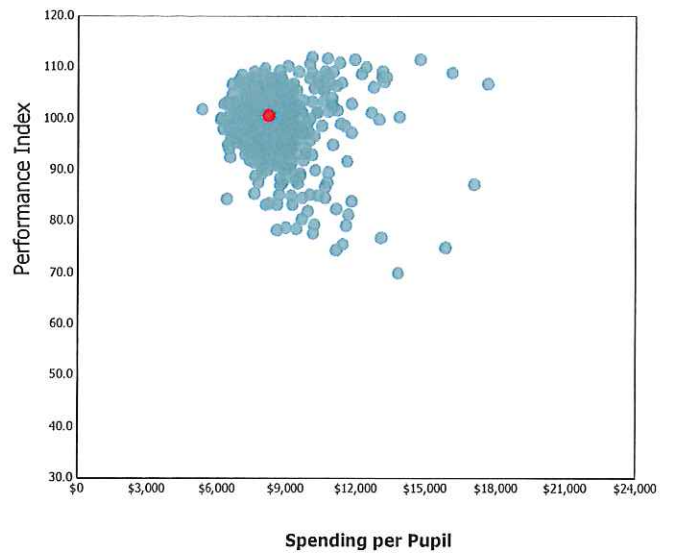
Spending and Performance

This measure answers the question – what is the relationship of average spending per student to performance, and how does that compare to similar districts and schools?

Comparison Group



All Public Districts



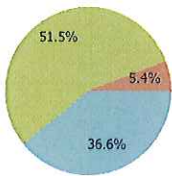
✗ Carlisle Local IS NOT among the 20% of traditional public districts with the highest academic performance index scores.

✗ Carlisle Local IS NOT among the 20% of traditional public districts with the lowest operating expenditures per pupil.

Source of Revenue

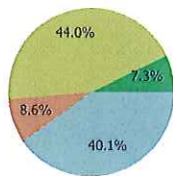
Source of Funds	District		State Total	
Local	\$5,967,993	36.6%	\$7,953,216,862	40.1%
State	\$8,396,761	51.5%	\$8,725,275,316	44.0%
Federal	\$878,689	5.4%	\$1,701,436,355	8.6%
Other Non-Tax	\$0	0.0%	\$1,442,122,710	7.3%
Total	\$15,243,443	100.0%	\$19,822,051,242	100.0%

District



Local State
Federal Other Non-Tax

State



Local Federal
State Other Non-Tax