

# 2012-2013 Report Card for Chamberlain Middle School

SCHOOL GRADE

Coming in  
2015



### Achievement

This grade combines two results for students who took the state tests. The first result answers the question – How many students passed the state test? The second result answers the question – How well did students do on the state test?

Performance Index  
82.7% ..... **B**  
Indicators Met  
85.7% ..... **B**

COMPONENT GRADE

Coming in  
2015



### Progress

This is your district's average progress for its students in math and reading, grades 4-8. It looks at how much each student learns in a year. Did the students get a year's worth of growth? Did they get more? Did they get less?

Value Added  
Overall..... **F**  
Gifted..... **F**  
Students with Disabilities..... **C**  
Lowest 20% in Achievement..... **D**

COMPONENT GRADE

Coming in  
2015



### Gap Closing

This grade shows how well all students are doing in your district in reading, math, and graduation. It answers the question – Is every student succeeding, regardless of income, race, culture or disability?

Annual Measurable Objectives  
100.0% ..... **A**

COMPONENT GRADE

Coming in  
2015



### Graduation Rate

This grade answers the question – How many ninth graders graduate in four years or five years?

Graduation Rates  
*This school is not evaluated for graduation rate because there are not enough students in the graduating class.*

COMPONENT GRADE

Coming in  
2015



### K-3 Literacy

This grade answers the question – Are more students learning to read in kindergarten through third grade? The 2014 report card will report some results. The 2015 report card will display one grade for kindergarten through grade 3.

COMPONENT GRADE

Coming in  
2015



### Prepared for Success

This grade answers the question – Are students who graduate from our district ready for college or a career? There are six ways to show that graduates are prepared. In the 2014 school year, the report card will show results for the six areas. The 2015 report card will display one grade combining the results of all six ways of showing graduates are prepared.

COMPONENT GRADE

Coming in  
2015

2012-2013 Report Card for Chamberlain Middle School

**Achievement**



This grade combines two results for students who took the state tests. The first result answers the question – How many students passed the state test? The second result answers the question – How well did students do on the state test?

COMPONENT GRADE

Coming in  
2015

GRADE

**B**

**Performance Index**

The Performance Index measures the test results of every student, not just those who score proficient or higher. There are six levels on the index and districts receive points for every student in each of these levels. The higher the achievement level the more the points awarded in the district's index. This rewards schools and districts for improving performance.

Performance Index

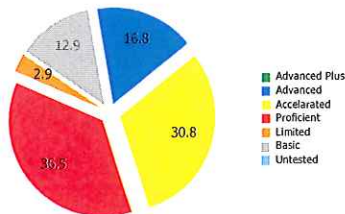


**82.7%**

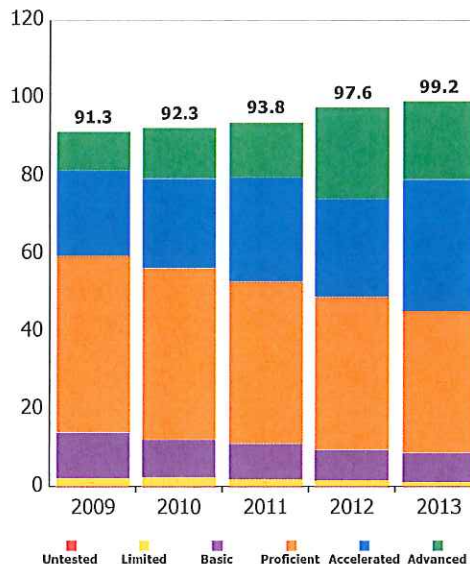
99.2 of a possible 120.0

- A = 90.0 - 100.0%
- B = 80.0 - 89.9%
- C = 70.0 - 79.9%
- D = 50.0 - 69.9%
- F = 0.0 - 49.9%

Achievement Level	Pct of Students	Points for this Level	Points Received
Advanced Plus	0.0	x 1.3	= 0.0
Advanced	16.8	x 1.2	= 20.2
Accelerated	30.8	x 1.1	= 33.9
Proficient	36.5	x 1.0	= 36.5
Basic	12.9	x 0.6	= 7.7
Limited	2.9	x 0.3	= 0.9
Untested	0.0	x 0.0	= 0.0
			<b>99.2</b>



Performance Index Trend



2012-2013 Report Card for Chamberlain Middle School

GRADE

**B**

**Indicators Met**

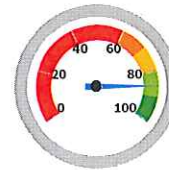
Indicators Met measures how many students have passed the state tests at a minimum level, called proficient, or higher. Test results are reported for each student in a grade and subject. At least 75 percent of students must pass to get credit for the indicator. Starting in the 2013-14 school year, a district or school needs to have 80 percent of their students pass at a minimum level or higher in order to "meet" an indicator.

Indicators Met %

**85.7%**

6.0 out of 7.0

A = 90.0 - 100.0%  
 B = 80.0 - 89.9%  
 C = 70.0 - 79.9%  
 D = 50.0 - 69.9%  
 F = 0.0 - 49.9%



Grades 3-5

*This school does not have enough test results in 3rd, 4th, or 5th grade to display this table.*

Grades 6-8

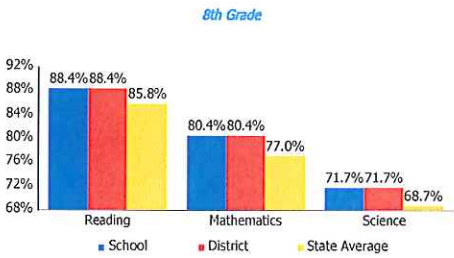
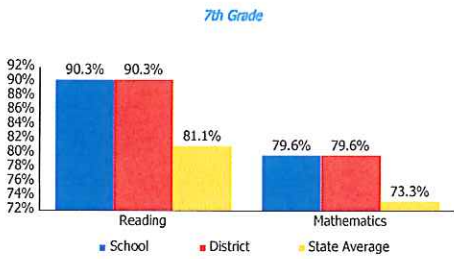
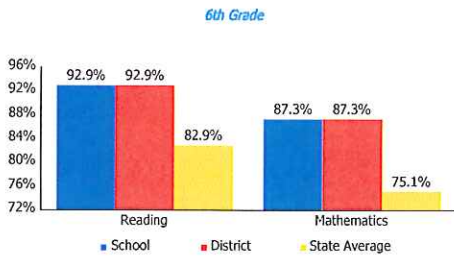
6th Grade	Mathematics	87.3%	✓
	Reading	92.9%	✓
7th Grade	Mathematics	79.6%	✓
	Reading	90.3%	✓
8th Grade	Mathematics	80.4%	✓
	Reading	88.4%	✓
	Science	71.7%	✗

Ohio Graduation Test

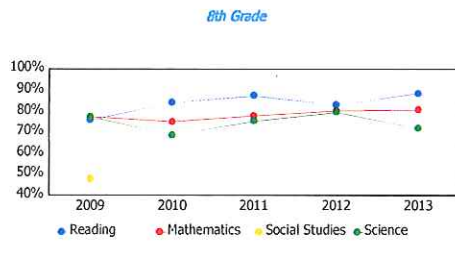
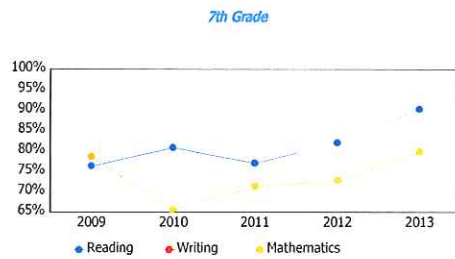
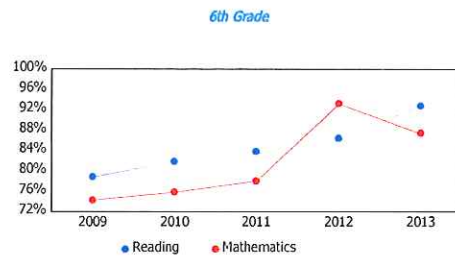
*This school does not have enough Ohio Graduation Test results to display this table.*

2012-2013 Report Card for Chamberlain Middle School

Proficiency Percent Comparison by Grade



Proficient Percent Trend by Grade



**Progress**



This is your school's average progress for its students in math and reading, grades 4-8. It looks at how much each student learns in a year. It answers the question – Did the students get a year's worth of growth? Did they get more? Did they get less?

COMPONENT GRADE  
**Coming in 2015**

GRADE	<b>Overall</b> This measures the progress for all students in math and reading, grades 4-8.
F	
GRADE	<b>Gifted Students</b> This measures the progress for students identified as gifted in reading, math, and/or superior cognitive ability.
F	
GRADE	<b>Students in the Lowest 20% in Achievement</b> This measures the progress for students identified as the lowest 20% statewide in reading and math achievement.
D	
GRADE	<b>Students with Disabilities</b> This measures the progress for students with disabilities.
C	
GRADE	<b>High School</b> A High School measure of progress will be implemented in the 2015-16 school year.
Coming in 2016	

**Progress Details**

This table shows the Progress scores by test grade and subject.

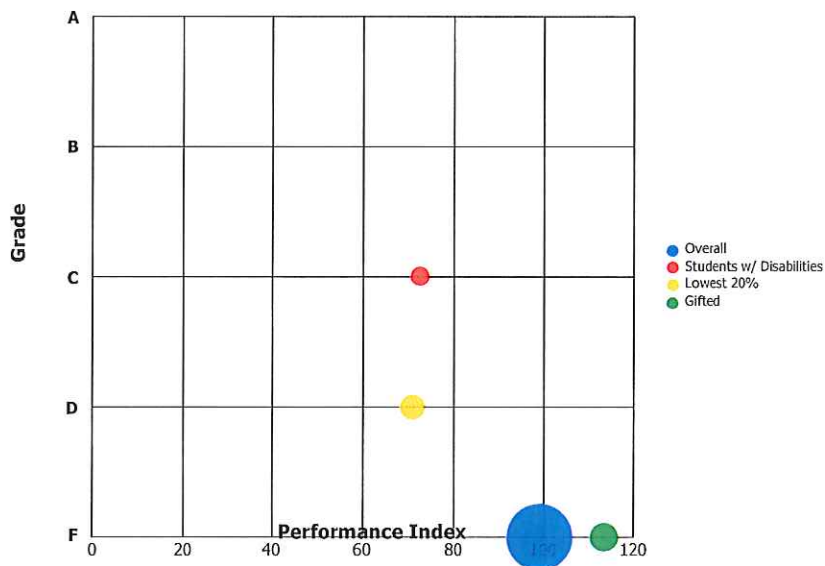
Test Grade	Progress Score		
	Reading	Mathematics	All Tests
All Grades	1.1	-8.9	-4.5
6th Grade	-4.2	-12.0	-10.1
7th Grade	3.2	-3.3	0.3
8th Grade	2.6	3.5	4.0

Although Progress scores are not assigned letter grades at this level of detail, the grading scale applied at the Overall (All Students, All Tests) level is:

A = 2.0 and up  
 B = 1.0 to 1.9  
 C = -1.0 to 0.9  
 D = -2.0 to -1.1  
 F = below -2.0

### Progress vs. Performance Index

This bubble chart shows the relationship between each subgroup's performance index results (horizontal axis) to the Value-Added letter grade (vertical axis). The size of the bubble represents the size of the student subgroup.





**Gap Closing**



This grade shows how well all students are doing in your district in reading, math, and graduation. It answers the question – Is every student succeeding, regardless of income, race, culture or disability?

COMPONENT GRADE

Coming in  
2015

GRADE

**A**

**Annual Measurable Objectives**

Annual Measurable Objectives (AMOs) compare the performance of all students to a state goal which is displayed as the red line in the following charts. These charts show how well each group achieves that goal in reading, math and graduation – and emphasize any achievement gaps that exist between groups. The ultimate goal is for all groups to achieve at high levels.

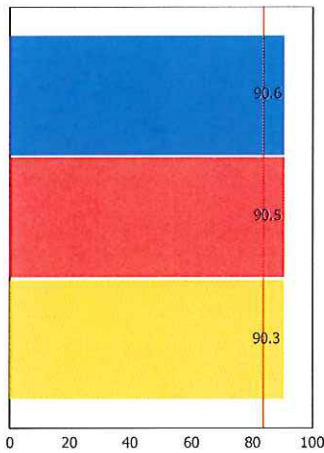
AMO Points



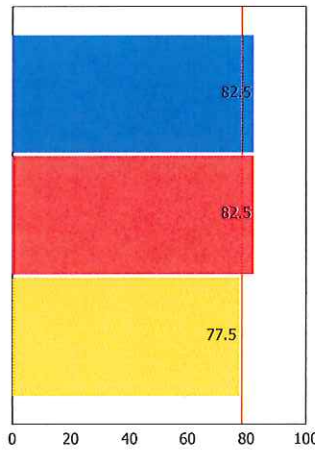
**100.0%**

- A = 90.0 - 100.0%
- B = 80.0 - 89.9%
- C = 70.0 - 79.9%
- D = 60.0 - 69.9%
- F = 0.0 - 59.9%

*Reading*



*Math*



*Graduation Rate*

*This school has no no Annual Measurable Objectives for Graduation Rate because there were not enough students to evaluate.*

■ Econ Disadvantage ■ All Students

■ All Students ■ White  
■ Econ Disadvantage

The red line on each graph identifies the Annual Measurable Objective. The 2013 AMO for Reading is 83.4%, for Math is 78.5%, and for Graduation Rate is 75.9%. Subgroups with fewer than 30 students are not rated and do not appear on the graphs.

**Graduation Rate**



This grade represents the percentage of students whom entered the 9th grade and graduated 4 and 5 years later.



*This school has not been assigned  
a grade for Graduation Rate  
because there were not enough  
students to evaluate.*



*The Graduation Rate graph that would appear in this space cannot be displayed because there were not enough students to evaluate.*

2012-2013 Report Card for Chamberlain Middle School



**Principal:** Daniel J. Turner  
**Address:** 720 Fairview Dr  
 Carlisle OH 45005-3148

**Phone:** (937) 746-3227

*Directory information current as of the 2012-2013 Report Card publication date*

**Your School's Students**

**Average Daily Enrollment:**

395

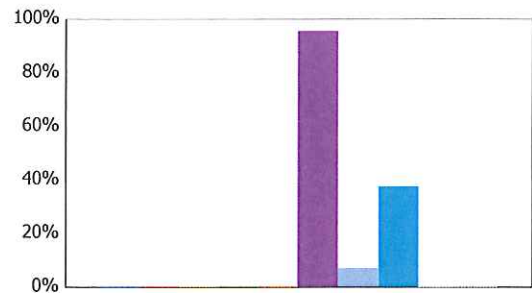
**Number of Limited English Proficiency Students Excluded from Accountability Calculations:**

--

**Enrollment by Subgroup**

	Enrollment #	Enrollment %
Am. Indian / Alaskan Native	NC	
Asian or Pacific Islander	NC	
Black, Non-Hispanic	NC	
Hispanic	NC	
Multiracial	NC	
White, Non-Hispanic	377	95.5%
Students with Disabilities	28	7.0%
Economically Disadvantaged	149	37.7%
Limited English Proficiency	NC	
Migrant	NC	

NC = Not Calculated because there are fewer than 10 in the group



- American Indian or Alaska...
- Asian or Pacific Islander
- Black, Non-Hispanic
- Hispanic
- Multiracial
- White, Non-Hispanic
- Students with Disabilities
- Economic Disadvantage
- Limited English Proficiency
- Migrant

Mobility Rates by Subgroup

	Student Mobility %
All Students	0.0%
Am. Indian / Alaskan Native	NC
Asian or Pacific Islander	NC
Black, Non-Hispanic	NC
Hispanic	NC
Multiracial	NC
White, Non-Hispanic	0.0%
Students with Disabilities	0.0%
Economically Disadvantaged	0.0%
Limited English Proficiency	NC
Migrant	NC

*A mobility rate chart cannot be displayed for this school because either there are not enough students to evaluate in any subgroup or all calculated results are 0.0%.*

NC = Not Calculated because there are fewer than 10 in the group

**Your School's Teachers**

Your School's Poverty Status: Medium-Low	Your School	Your District
Percentage of teachers with at least a Bachelor's Degree	100.0	99.1
Percentage of teachers with at least a Master's Degree	67.7	71.0
Percentage of core academic subject and elementary classes not taught by Highly Qualified Teachers	0	0
Percentage of core academic subject and elementary classes taught by properly certified teachers	97.8	99.6
Percentage of core academic subject elementary and secondary classes taught by teachers with temporary, conditional or long-term substitute certification/licensure	0	0

High-poverty schools are those ranked in the top quartile based on the percentage of economically disadvantaged students. Low-poverty schools are those ranked in the bottom quartile based on the percentage of economically disadvantaged students. A district may have buildings in both quartiles, in just one quartile or in neither quartile.

NC = Not Calculated because there are fewer than 10 in the group

**Wellness and Physical Education**

The extent to which students are successful in meeting the benchmarks contained in Ohio's physical education standards

Moderate Success

### Financial Data

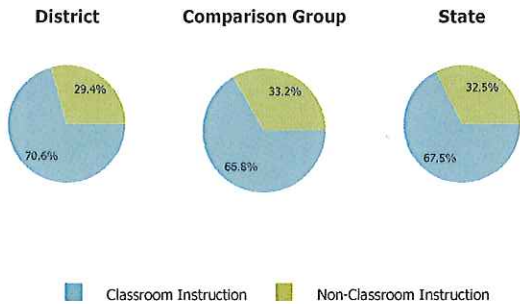
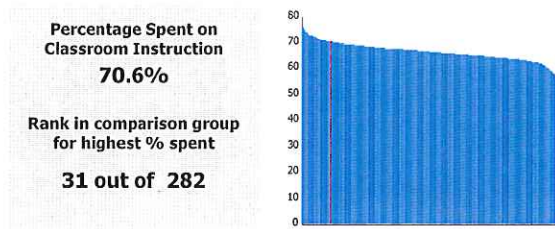


These measures answer several questions about spending and performance. How much is spent on Classroom instruction? How much, on average, is spent on each student? What is the source of the revenue? How do these measures compare to other districts and schools?

*Note: Financial data is district level data. The data on this page is for Carlisle Local, not just Chamberlain Middle School.*

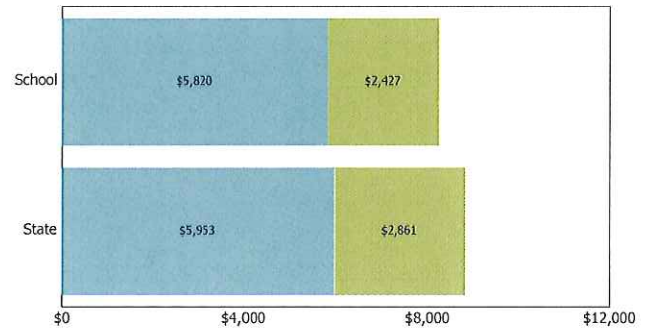
**Comparison Group:** Enrollment between 1000 and 2499

#### Classroom Spending Data



#### Spending per Pupil Data

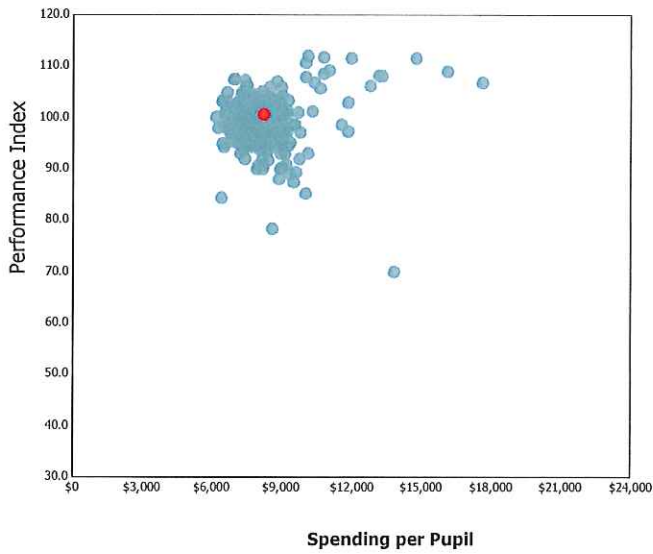
	District	State
Operating Spending per Pupil	\$8,247	\$8,814
Classroom Instruction	\$5,820	\$5,953
Non-Classroom Spending	\$2,427	\$2,861



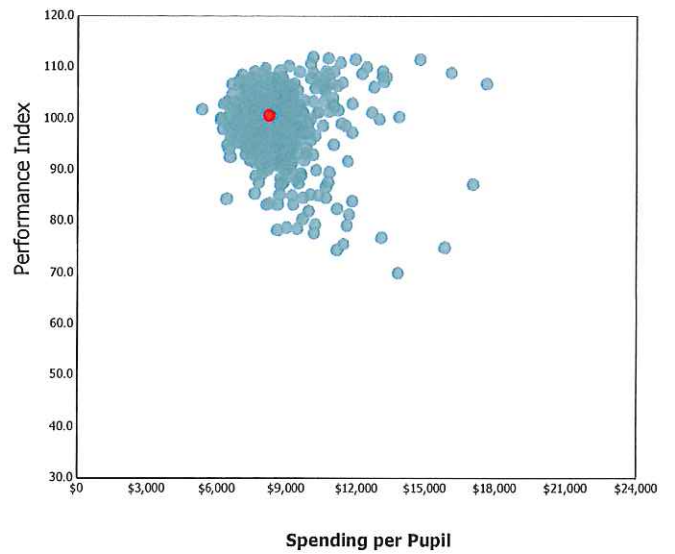
### Spending and Performance

This measure answers the question – what is the relationship of average spending per student to performance, and how does that compare to similar districts and schools?

Comparison Group



All Public Districts



✘ Carlisle Local IS NOT among the 20% of traditional public districts with the highest academic performance index scores.

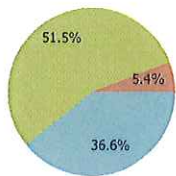
✘ Carlisle Local IS NOT among the 20% of traditional public districts with the lowest operating expenditures per pupil.



Source of Revenue

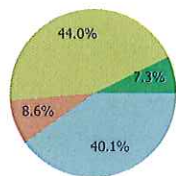
Source of Funds	District		State Total	
Local	\$5,967,993	36.6%	\$7,953,216,862	40.1%
State	\$8,396,761	51.5%	\$8,725,275,316	44.0%
Federal	\$878,689	5.4%	\$1,701,436,355	8.6%
Other Non-Tax	\$0	0.0%	\$1,442,122,710	7.3%
Total	\$15,243,443	100.0%	\$19,822,051,242	100.0%

District



Local State  
Federal Other Non-Tax

State



Local Federal  
State Other Non-Tax