

2012-2013 Report Card for Carlisle Local School District

DISTRICT GRADE

Coming in
2015



Achievement

This grade combines two results for students who took the state tests. The first result answers the question – How many students passed the state test? The second result answers the question – How well did students do on the state test?

Performance Index

83.8% **B**

Indicators Met

95.8% **A**

COMPONENT GRADE

Coming in
2015



Progress

This is your district's average progress for its students in math and reading, grades 4-8. It looks at how much each student learns in a year. Did the students get a year's worth of growth? Did they get more? Did they get less?

Value-Added

Overall..... **C**

Gifted..... **C**

Students with Disabilities..... **C**

Lowest 20% in Achievement..... **D**

COMPONENT GRADE

Coming in
2015



Gap Closing

This grade shows how well all students are doing in your district in reading, math, and graduation. It answers the question – Is every student succeeding, regardless of income, race, culture or disability?

Annual Measurable Objectives

83.3% **B**

COMPONENT GRADE

Coming in
2015



Graduation Rate

This grade answers the question – How many ninth graders graduate in four years or five years?

Graduation Rates

95.2% of students graduated in 4 years..... **A**

93.8% of students graduated in 5 years..... **B**

COMPONENT GRADE

Coming in
2015



K-3 Literacy

This grade answers the question – Are more students learning to read in kindergarten through third grade? The 2014 report card will report some results. The 2015 report card will display one grade for kindergarten through grade 3.

COMPONENT GRADE

Coming in
2015



Prepared for Success

This grade answers the question – Are students who graduate from our district ready for college or a career? There are six ways to show that graduates are prepared. In the 2014 school year, the report card will show results for the six areas. The 2015 report card will display one grade combining the results of all six ways of showing graduates are prepared.

COMPONENT GRADE

Coming in
2015

2012-2013 Report Card for Carlisle Local School District

Achievement



This grade combines two results for students who took the state tests. The first result answers the question – How many students passed the state test? The second result answers the question – How well did students do on the state test?

COMPONENT GRADE

Coming in
2015

GRADE

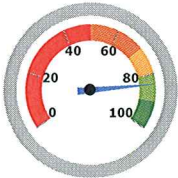
B

Performance Index

The Performance Index measures the test results of every student, not just those who score proficient or higher. There are six levels on the index and districts receive points for every student in each of these levels. The higher the achievement level the more the points awarded in the district's index. This rewards schools and districts for improving performance.

Performance Index Trend

Performance Index

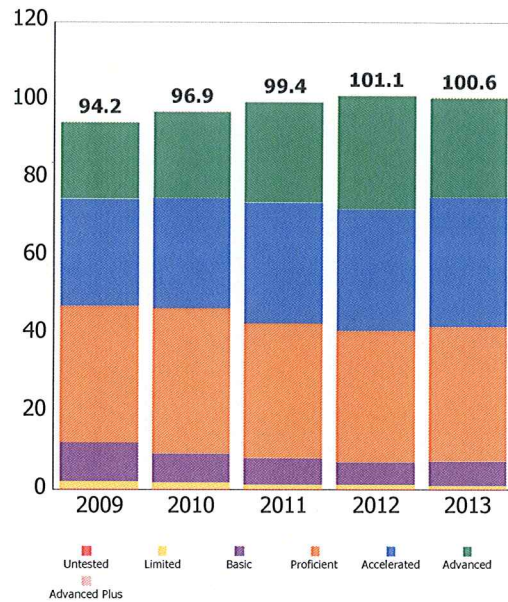
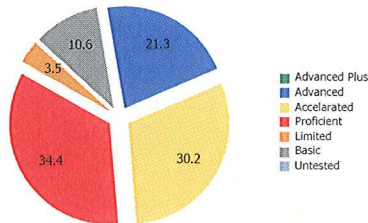


83.8%

100.6 of a possible 120.0

A = 90.0 - 100.0%
B = 80.0 - 89.9%
C = 70.0 - 79.9%
D = 50.0 - 69.9%
F = 0.0 - 49.9%

Achievement Level	Pct of Students	Points for this Level	Points Received
Advanced Plus	0.0	x 1.3	= 0.1
Advanced	21.3	x 1.2	= 25.5
Accelerated	30.2	x 1.1	= 33.2
Proficient	34.4	x 1.0	= 34.4
Basic	10.6	x 0.6	= 6.4
Limited	3.5	x 0.3	= 1.1
Untested	0.0	x 0.0	= 0.0
			100.6



2012-2013 Report Card for Carlisle Local School District

GRADE

A

Indicators Met

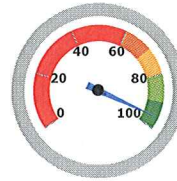
Indicators Met measures how many students have passed the state tests at a minimum level, called proficient, or higher. Test results are reported for each student in a grade and subject. At least 75 percent of students must pass to get credit for the indicator. Starting in the 2013-14 school year, a district or school needs to have 80 percent of their students pass at a minimum level or higher in order to "meet" an indicator.

Indicators Met %

95.8%

23.0 out of 24.0

A = 90.0 - 100.0%
 B = 80.0 - 89.9%
 C = 70.0 - 79.9%
 D = 50.0 - 69.9%
 F = 0.0 - 49.9%



Grades 3-5

3rd Grade	Mathematics	91.7%	✓
	Reading	90.0%	✓
4th Grade	Mathematics	95.0%	✓
	Reading	91.5%	✓
5th Grade	Mathematics	81.0%	✓
	Reading	81.0%	✓
	Science	77.8%	✓

Grades 6-8

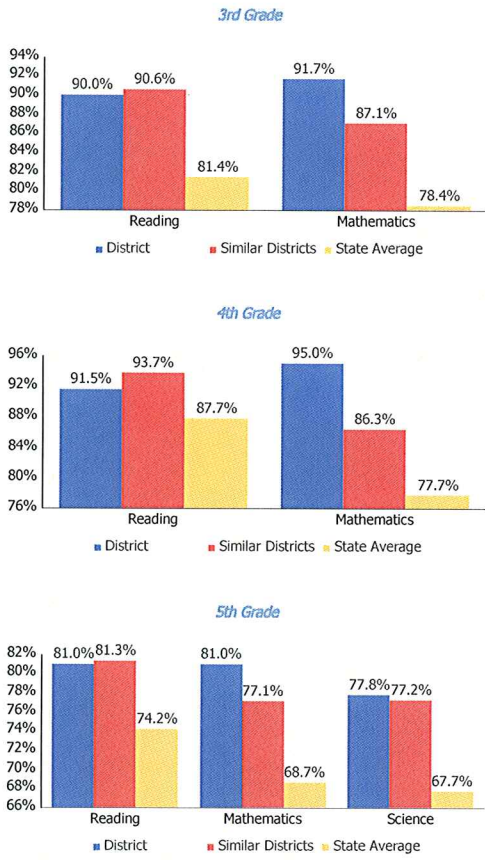
6th Grade	Mathematics	87.3%	✓
	Reading	92.9%	✓
7th Grade	Mathematics	79.6%	✓
	Reading	90.3%	✓
8th Grade	Mathematics	80.4%	✓
	Reading	88.4%	✓
	Science	71.7%	✗

Ohio Graduation Test

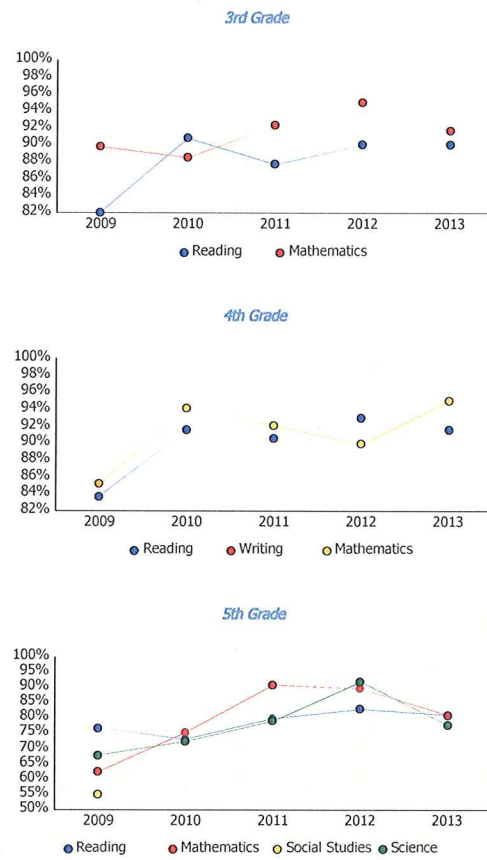
OGT, 10th Graders	Mathematics	90.1%	✓
	Reading	91.9%	✓
	Science	77.5%	✓
	Social Studies	85.6%	✓
	Writing	91.9%	✓
OGT, 11th Graders	Mathematics	95.3%	✓
	Reading	96.1%	✓
	Science	91.5%	✓
	Social Studies	93.0%	✓
	Writing	92.2%	✓

2012-2013 Report Card for Carlisle Local School District

Proficiency Percent Comparison by Grade

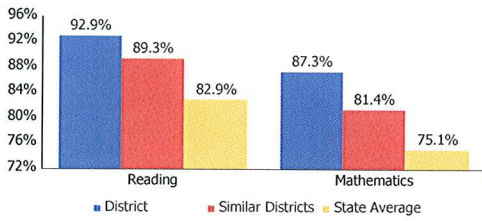


Proficient Percent Trend by Grade

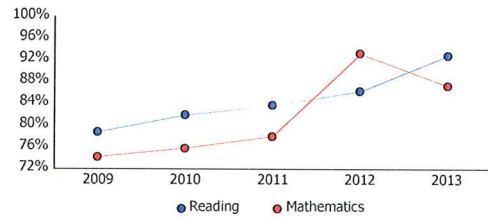


2012-2013 Report Card for Carlisle Local School District

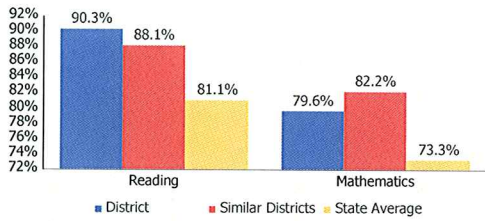
6th Grade



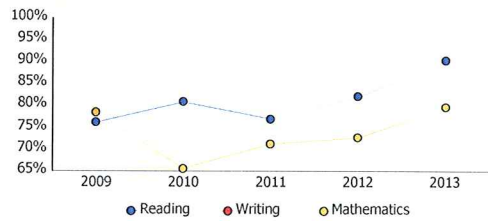
6th Grade



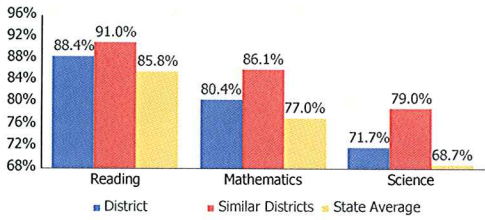
7th Grade



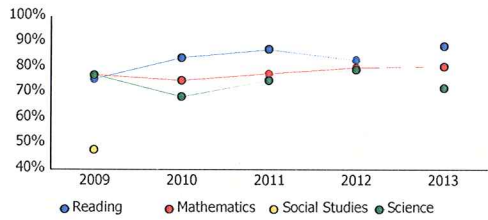
7th Grade



8th Grade

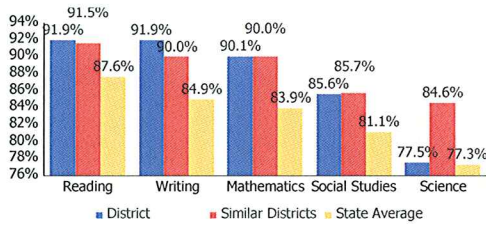


8th Grade

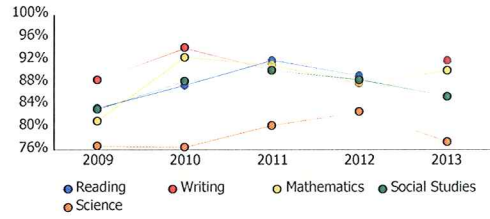


2012-2013 Report Card for Carlisle Local School District

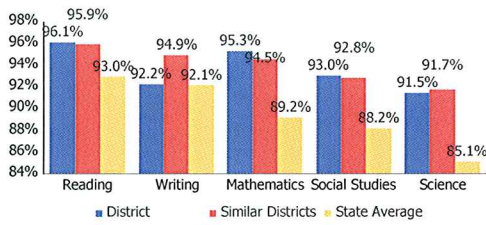
10th Grade OGT



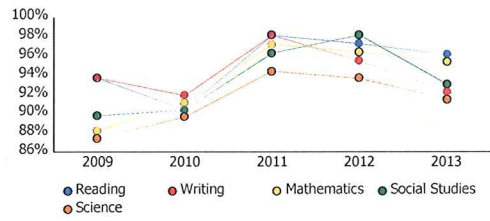
10th Grade OGT



11th Grade Cumulative OGT



11th Grade Cumulative OGT



Progress



This is your district's average progress for its students in math and reading, grades 4-8. It looks at how much each student learns in a year. It answers the question – Did the students get a year's worth of growth? Did they get more? Did they get less?

COMPONENT GRADE

Coming in
2015

GRADE	Overall This measures the progress for all students in math and reading, grades 4-8.
C	
GRADE	Gifted Students This measures the progress for students identified as gifted in reading, math, and/or superior cognitive ability.
C	
GRADE	Students in the Lowest 20% in Achievement This measures the progress for students identified as the lowest 20% statewide in reading and math achievement.
D	
GRADE	Students with Disabilities This measures the progress for students with disabilities.
C	
GRADE	High School A High School measure of progress will be implemented in the 2015-16 school year.
Coming in 2016	

Progress Details

This table shows the Progress scores by test grade and subject.

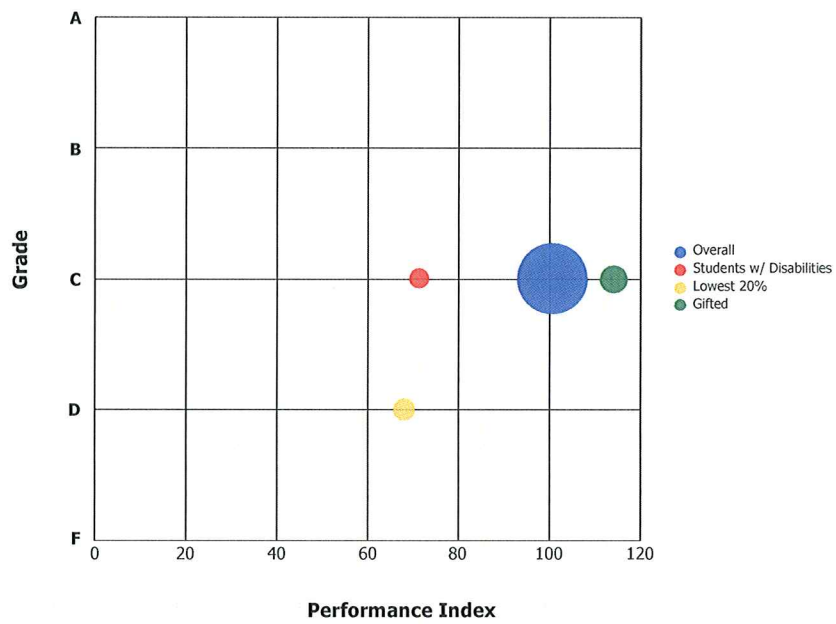
Test Grade	Progress Score		
	Reading	Mathematics	All Tests
All Grades	1.5	-2.8	-0.7
4th Grade	0.7	0.6	0.8
5th Grade	0.3	5.9	3.7
6th Grade	-4.1	-11.6	-9.9
7th Grade	3.2	-3.2	0.3
8th Grade	2.6	3.4	3.9

Although Progress scores are not assigned letter grades at this level of detail, the grading scale applied at the Overall (All Students, All Tests) level is:

A = 2.0 and up
 B = 1.0 to 1.9
 C = -1.0 to 0.9
 D = -2.0 to -1.1
 F = below -2.0

Progress vs. Performance Index

This bubble chart shows the relationship between each subgroup's performance index results (horizontal axis) to the Value-Added letter grade (vertical axis). The size of the bubble represents the size of the student subgroup.



Gap Closing



This grade shows how well all students are doing in your district in reading, math, and graduation. It answers the question – Is every student succeeding, regardless of income, race, culture or disability?

COMPONENT GRADE

Coming in
2015

GRADE

B

Annual Measurable Objectives

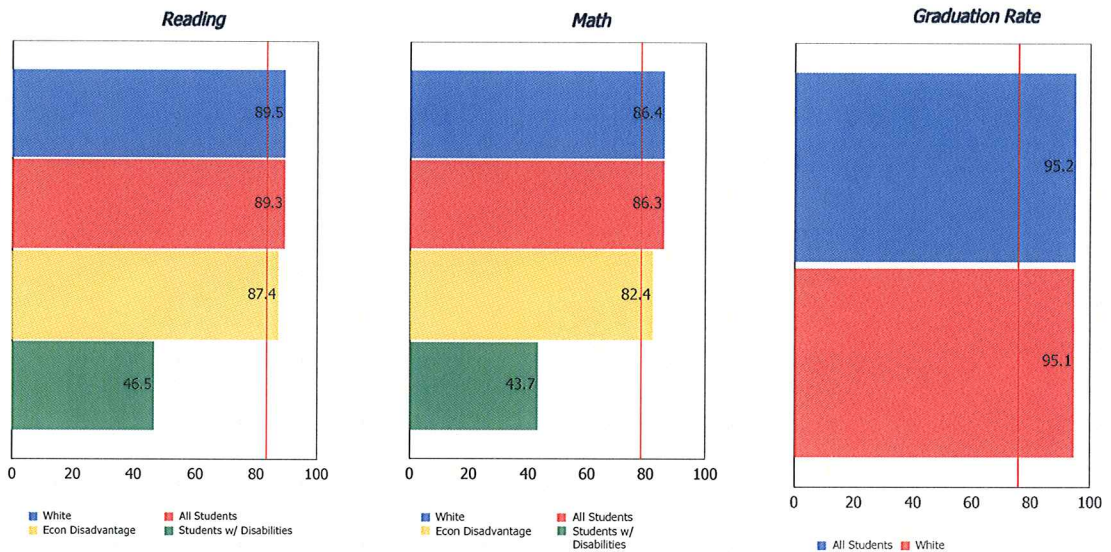
Annual Measurable Objectives (AMOs) compare the performance of all students to a state goal which is displayed as the red line in the following charts. These charts show how well each group achieves that goal in reading, math and graduation – and emphasize any achievement gaps that exist between groups. The ultimate goal is for all groups to achieve at high levels.

AMO Points



83.3%

A = 90.0 - 100.0%
 B = 80.0 - 89.9%
 C = 70.0 - 79.9%
 D = 60.0 - 69.9%
 F = 0.0 - 59.9%



The red line on each graph identifies the Annual Measurable Objective. The 2013 AMO for Reading is 83.4%, for Math is 78.5%, and for Graduation Rate is 75.9%. Subgroups with fewer than 30 students are not rated and do not appear on the graphs.

2012-2013 Report Card for Carlisle Local School District

Graduation Rate



This grade represents the percentage of students whom entered the 9th grade and graduated 4 and 5 years later.

COMPONENT GRADE

Coming in 2015

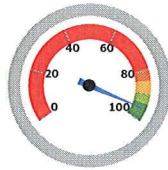
4-Year Graduation Rate

The 4-year graduation rate applies to the Class of 2012 who graduated within four years, i.e. students who entered the 9th grade in 2009 and graduated by 2012.

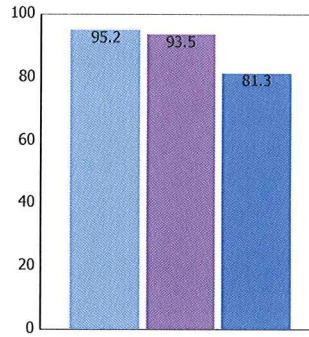
GRADE
A

95.2%

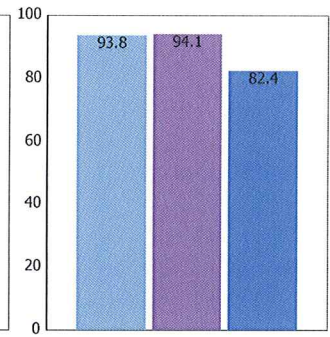
- A = 93.0 - 100.0%
- B = 89.0 - 92.9%
- C = 84.0 - 88.9%
- D = 79.0 - 83.9%
- F = 0.0 - 78.9%



4-Year Rate



5-Year Rate



District Similar Districts State Average

District Similar Districts State Average

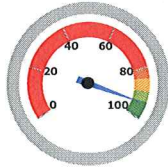
5-Year Graduation Rate

The 5-year graduation rate applies to the Class of 2011 who graduated within five years, i.e. students who entered the 9th grade in 2008 and graduated by 2012.

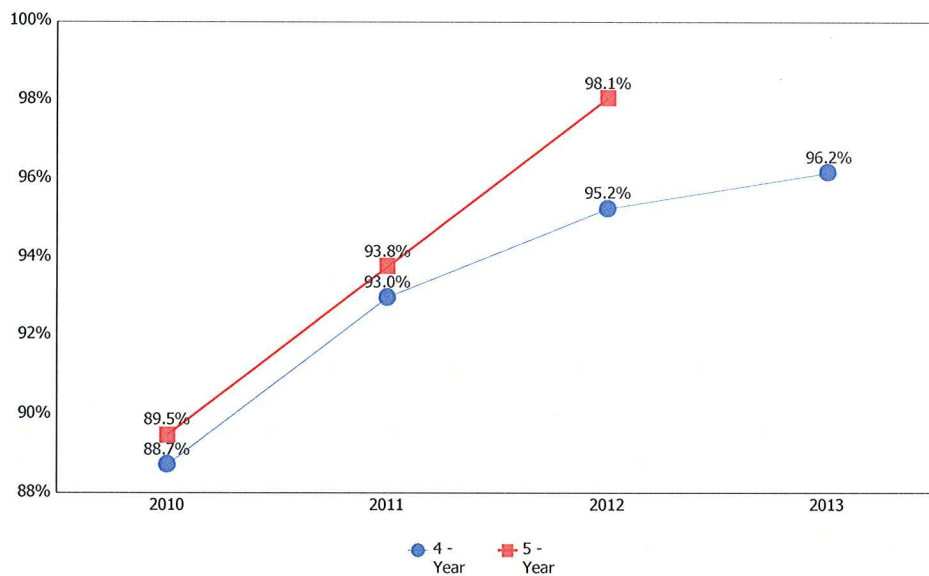
GRADE
B

93.8%

- A = 95.0 - 100.0%
- B = 90.0 - 94.9%
- C = 85.0 - 89.9%
- D = 80.0 - 84.9%
- F = 0.0 - 79.9%



Graduation Rate Trend



Note: The 5-year graduation rate does not appear in the final year of this graph because the necessary data is not yet available to calculate the 5-year rate for that school year.

2012-2013 Report Card for Carlisle Local School District



Superintendent: Larry R. Hook
Address: 724 Fairview Dr
 Carlisle OH 45005-3148

Phone: (937) 746-0710
County: Warren

Directory information current as of the 2012-2013 Report Card publication date

Your District's Students

Average Daily Enrollment:

1,615

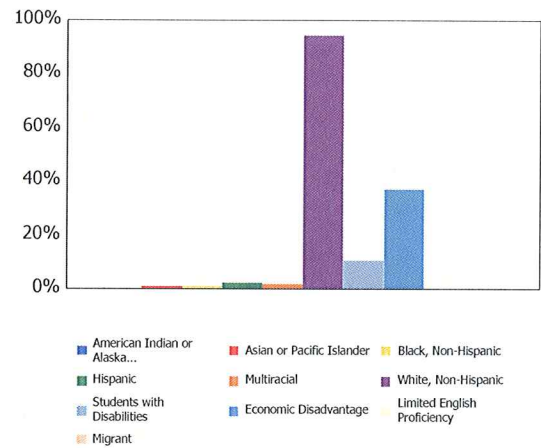
Number of Limited English Proficiency Students Excluded from Accountability Calculations:

--

Enrollment by Subgroup

	Enrollment #	Enrollment %
Am. Indian / Alaskan Native	NC	
Asian or Pacific Islander	14	0.8%
Black, Non-Hispanic	14	0.8%
Hispanic	34	2.1%
Multiracial	30	1.8%
White, Non-Hispanic	1,524	94.4%
Students with Disabilities	168	10.4%
Economically Disadvantaged	593	36.7%
Limited English Proficiency	NC	
Migrant	NC	

NC = Not Calculated because there are fewer than 10 in the group

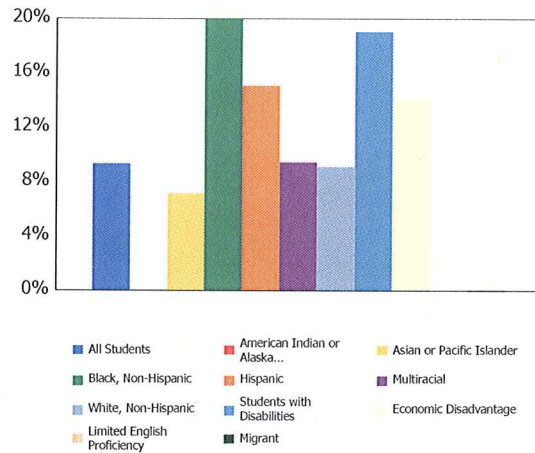


Enrollments of less than 10 students are not shown.

Mobility Rates by Subgroup

	District Mobility %
All Students	9.3%
Am. Indian / Alaskan Native	
Asian or Pacific Islander	7.1%
Black, Non-Hispanic	20.0%
Hispanic	15.0%
Multiracial	9.4%
White, Non-Hispanic	9.1%
Students with Disabilities	19.0%
Economically Disadvantaged	14.0%
Limited English Proficiency	
Migrant	

NC = Not Calculated because there are fewer than 10 in the group



This chart shows the percentage of students who, because they moved into or out of the district, did not spend a majority of the school year within the district.

Your District's Teachers

	All Schools in the District	High Poverty Schools	Low Poverty Schools
Percentage of teachers with at least a Bachelor's Degree	99.1	0.0	0.0
Percentage of teachers with at least a Master's Degree	71.0	0.0	0.0
Percentage of core academic subject and elementary classes not taught by Highly Qualified Teachers	0	--	--
Percentage of core academic subject and elementary classes taught by properly certified teachers	99.6	--	--
Percentage of core academic subject elementary and secondary classes taught by teachers with temporary, conditional or long-term substitute certification/licensure	0	--	--

High-poverty schools are those ranked in the top quartile based on the percentage of economically disadvantaged students. Low-poverty schools are those ranked in the bottom quartile based on the percentage of economically disadvantaged students. A district may have buildings in both quartiles, in just one quartile or in neither quartile.

NC = Not Calculated because there are fewer than 10 in the group

Wellness and Physical Education

The extent to which students are successful in meeting the benchmarks contained in Ohio's physical education standards	Compliance with the federal requirement for implementing a local wellness policy	Elected to administer BMI screening	Participation in Physical Activity Pilot Program
Moderate Success	✓	✗	✗

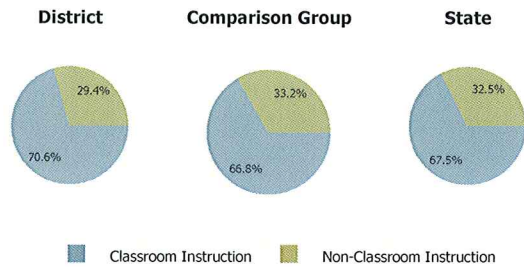
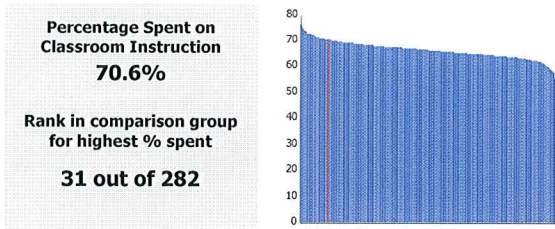
Financial Data



These measures answer several questions about spending and performance. How much is spent on Classroom instruction? How much, on average, is spent on each student? What is the source of the revenue? How do these measures compare to other districts and schools?

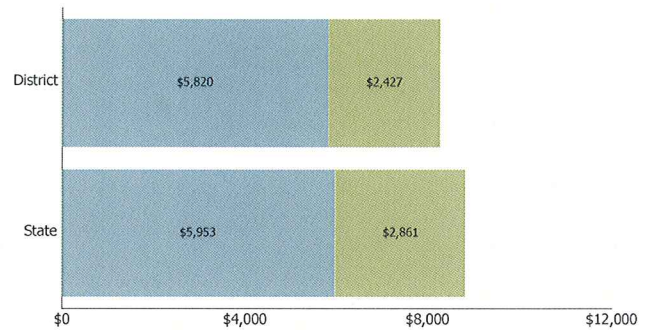
Comparison Group: Enrollment between 1000 and 2499

Classroom Spending Data



Spending per Pupil Data

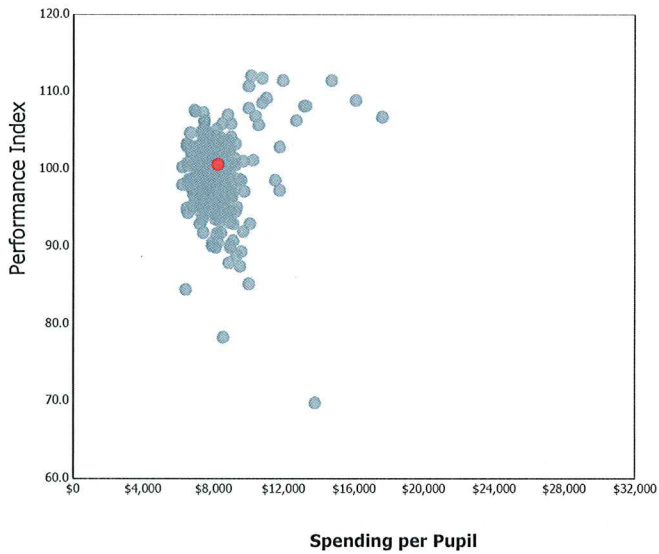
	District	State
Operating Spending per Pupil	\$8,247	\$8,814
Classroom Instruction	\$5,820	\$5,953
Non-Classroom Spending	\$2,427	\$2,861



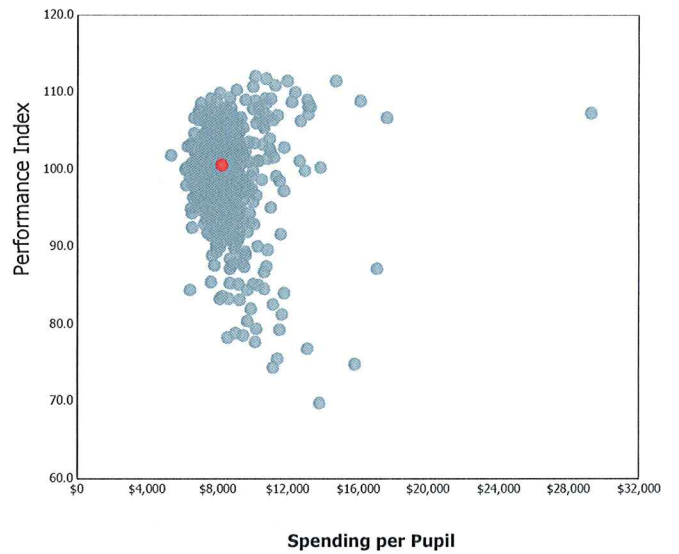
Spending and Performance

This measure answers the question – what is the relationship of average spending per student to performance, and how does that compare to similar districts and schools?

Comparison Group



All Districts



✘ Carlisle Local IS NOT among the 20% of traditional public districts with the highest academic performance index scores.

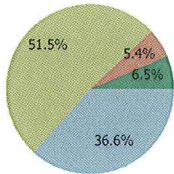
✘ Carlisle Local IS NOT among the 20% of traditional public districts with the lowest operating expenditures per pupil

2012-2013 Report Card for Carlisle Local School District

Source of Revenue

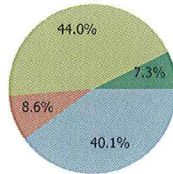
Source of Funds	District	State Total
Local	\$5,967,993 36.6%	\$7,953,216,862 40.1%
State	\$8,396,761 51.5%	\$8,725,275,316 44.0%
Federal	\$878,689 5.4%	\$1,701,436,355 8.6%
Other Non-Tax	\$1,064,336 6.5%	\$1,442,122,710 7.3%
Total	\$16,307,779 100.0%	\$19,822,051,242 100.0%

District



Local State
Federal Other Non-Tax

State



Local State
Federal Other Non-Tax

2012-2013 Report Card for Carlisle Local School District



Superintendent: Larry R. Hook
Address: 724 Fairview Dr
 Carlisle OH 45005-3148

Phone: (937) 746-0710
County: Warren

Your District's Schools

School	Achievement		Progress				Gap Closing Annual Measurable Objectives	Graduation Rate	
	Indicators Met	Performance Index	Overall	Gifted	Lowest 20% Achieve	Students with Disabilities		4-Year Graduation Rate	5-Year Graduation Rate
Alden R Brown Elementary School	NR	NR	NR	NR	NR	NR	NR	NR	NR
Bobby F. Grigsby Intermediate School	B	A	A	C	D	C	C	NR	NR
Carlisle High School	B	A	NR	NR	NR	NR	A	A	B
Chamberlain Middle School	B	B	F	F	D	C	A	NR	NR